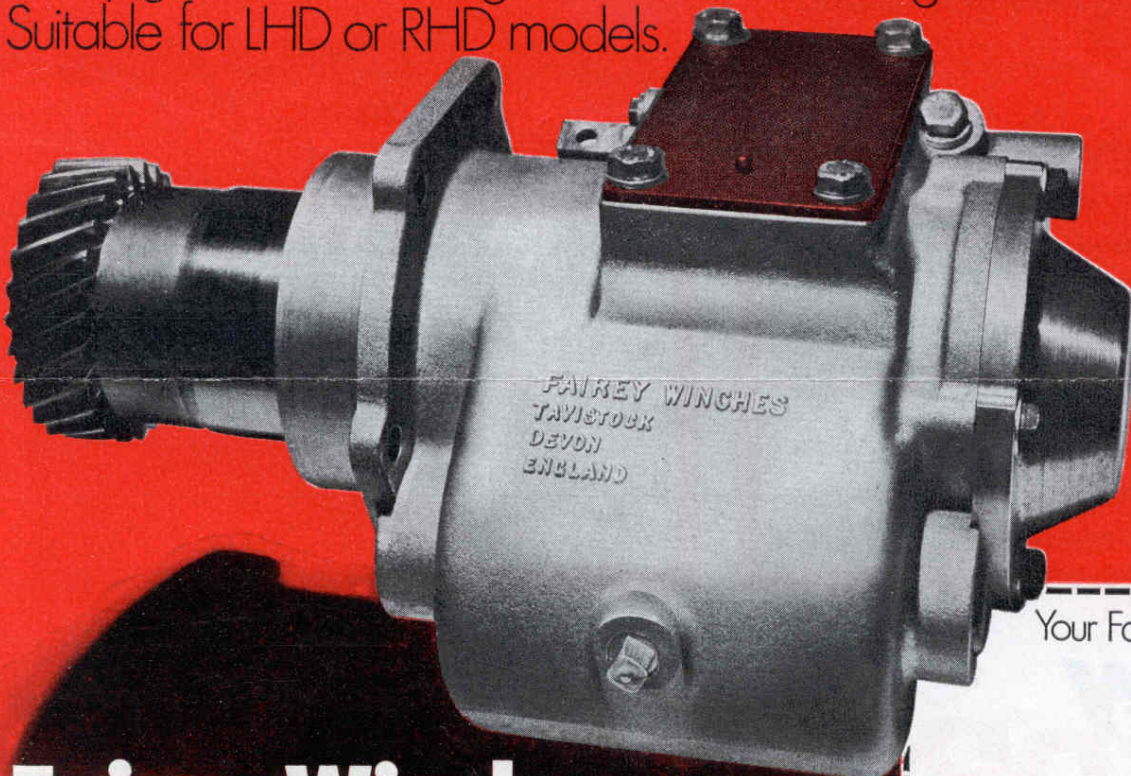


**Saves fuel, improves performance,
reduces wear.**



Fairey **LANDROVER** **OVERDRIVE**

This unit permits changing into overdrive at any speed,
in any gear, while driving forward or reversing.
Suitable for LHD or RHD models.



*Tested and approved
by the
Rover Company*



*Awarded the A.A.
Seal of Approval*

Your Fairey Winches dealer

Fairey Winches LTD.

Tavistock, Devon. Tel: (0822) 2345

Engineered exclusively for the Land-Rover. Adds an extra dimension to every gear.

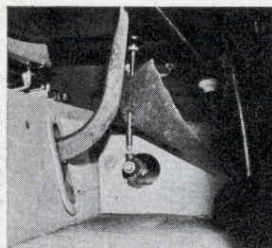
IMPROVES PERFORMANCE

- Roadspeed increased by 27.8% at the same engine speed.
- Increased M.P.G.
- Reduces engine and gearbox wear.
- Doubles gear selection.
- Improves 'gear for job' selection.
- Fits all series of Land-Rover, with a standard gearbox.

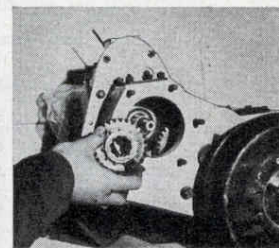
BUILT FOR SERVICE

- Precision built.
- Easily fitted in two to three hours.
- Full synchromesh gear selection.
- Mechanical gear change.
- P.T.O. Adaptor will be available.
- No electrical or hydraulic connections.

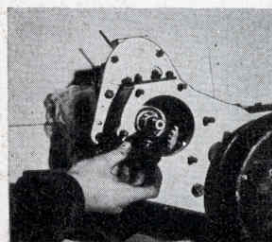
Comes as a kit - fitted in 2-3 hours.



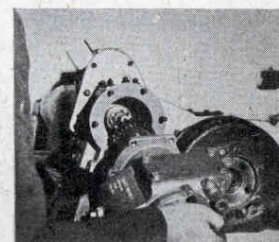
1 Cut transmission tunnel for gear lever.



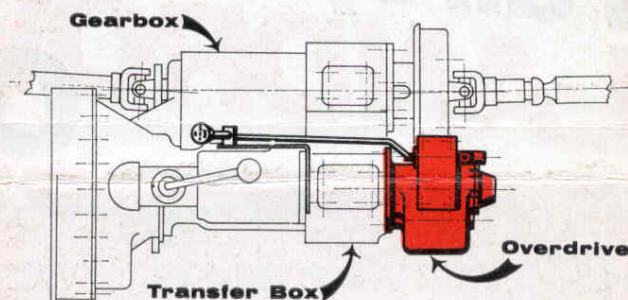
2 Remove vehicle's drive gear.



3 Install overdrive adaptor gear.



4 Install overdrive unit.



Technical information

Oil EP 90 .4 litres (3/4 pint)

	High Ratio		Low Ratio	
	Standard Drive	Overdrive	Standard Drive	Overdrive
1st	19.88:1	15.557:1 [†]	40.7:1	31.849:1
2nd	12.00:1	9.39:1	24.6:1	19.25:1
3rd	8.05:1	6.29:1	16.5:1	12.912:1
4th	5.4:1	4.255:1	11.1:1	8.686:1
Rev.	21.66:1	16.433:1	44.3:1	34.66:1

M.P.H./K.P.H. Comparison at 1000 r.p.m. in Top Gear				
	88"		109"	
	Std. Dr.	O/D	Std. Dr.	O/D
High Ratio				
MPH	15	19.2	16.5	21.1
KPH	24	30.8	26.6	34.0
Low Ratio				
MPH	7.2	9.2	8.0	10.2
KPH	11.6	14.8	12.9	16.5

Fairey LANDROVER OVERDRIVE